



## Rabbit anti Neuropilin-1 (CT) Polyclonal Antibody

Alternative Name(s): Neuropilin-1; transmembrane receptor; VEGF165R; NRP1; CD304

### Order Information

- **Description:** Neuropilin-1 (CT)
- **Catalogue:** 620-350
- **Lot:** See label
- **Size:** 100ug/200ul
- **Host:** Rabbit
- **Clone:** nan
- **Application:** IHC(P), WB
- **Reactivity:** Hu, Bv

### **ANTIGEN PREPARATION**

A synthetic peptide corresponding to the C-terminus of human Neuropilin1 protein. This sequence is identical among human and bovine.

### **BACKGROUND**

The neuropilin-1 (Nrp1) is a multifunctional protein, identified principally as a receptor for the class 3 semaphorins and members of the vascular endothelial growth factor (VEGF) family, but it is capable of other interactions. It is a marker of regulatory T cells (Tr), which often carry Nrp1 and latency-associated peptide (LAP)-TGF-beta1 (the latent form). Nrp1 is reported to be expressed in breast cancer cells. The ischemia can increase neuropilin 1 protein expression in experimental rat brain as well.

### **PURIFICATION**

The Rabbit IgG is purified by Epitope Affinity Purification

### **FORMULATION**

This affinity purified antibody is supplied in sterile Phosphatebuffered saline (pH7.2) containing antibody stabilizer

### **SPECIFICITY**

This antibody recognizes ~130 kDa of human Neuropilin1 protein. The other species are not tested.

### **STORAGE**

The antibodies are stable for 24 months from date of receipt when stored at -20oC to -70oC. The antibodies can be stored at 2oC-8oC for three month without detectable loss of activity. Avoid repeated freezing-thawing cycles.

### **APPLICATIONS/SUGGESTED WORKING DILUTIONS\***

- Western Blot: 0.1-1 µg/ml
- ELISA: 0.01-0.1 µg/ml
- Immunoprecipitation: 2-5 µg/ml
- IHC: 2-10 µg/ml
- Flow cytometry: Not tested
- Molecular Weight: 140.0
- Positive Control: Kidney Tissue
- Cellular Location: Cell Membrane

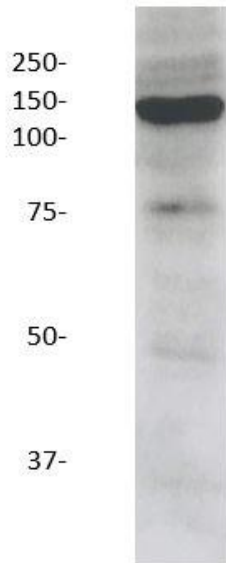
\*Optimal dilutions should be determined by researchers for the specific applications.

### **FOR RESEARCH USE ONLY.**

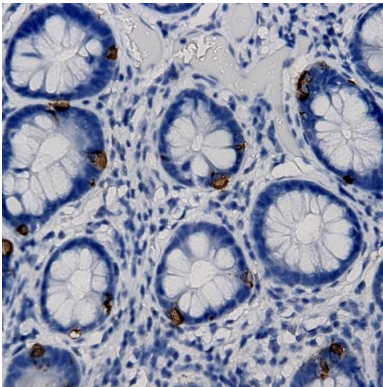
AbboMax, Inc 2528 Qume Drive, Suite 8, San Jose, California 95131, USA  
1 408-573-1898 (Tel). 1 408-573-1858 (Fax). [www.abbomax.com](http://www.abbomax.com) [info@abbomax.com](mailto:info@abbomax.com)

**DATA ATTACHMENTS**

**MW (kDa)**      **1**



Western Blot: The whole cell lysate from U118MG immunoblotted by Rabbit anti-Neuropilin1 (Cat#620-350) at 1:1000. An immunoreactive band at ~130kDa was observed.



Immunohistochemistry: Human colon tissue (FFPE) stained with Rabbit anti-Neuropilin-1 (CT) antibody (Cat# 620-350) at 1:200 for 10 min @ RT. Staining of formalin-fixed tissue requires boiling tissue sections in 10 mM Citrate Buffer, pH 6.0 for 10 min followed by cooling at RT for 20 min.

**REFERENCES**

**FOR RESEARCH USE ONLY.**